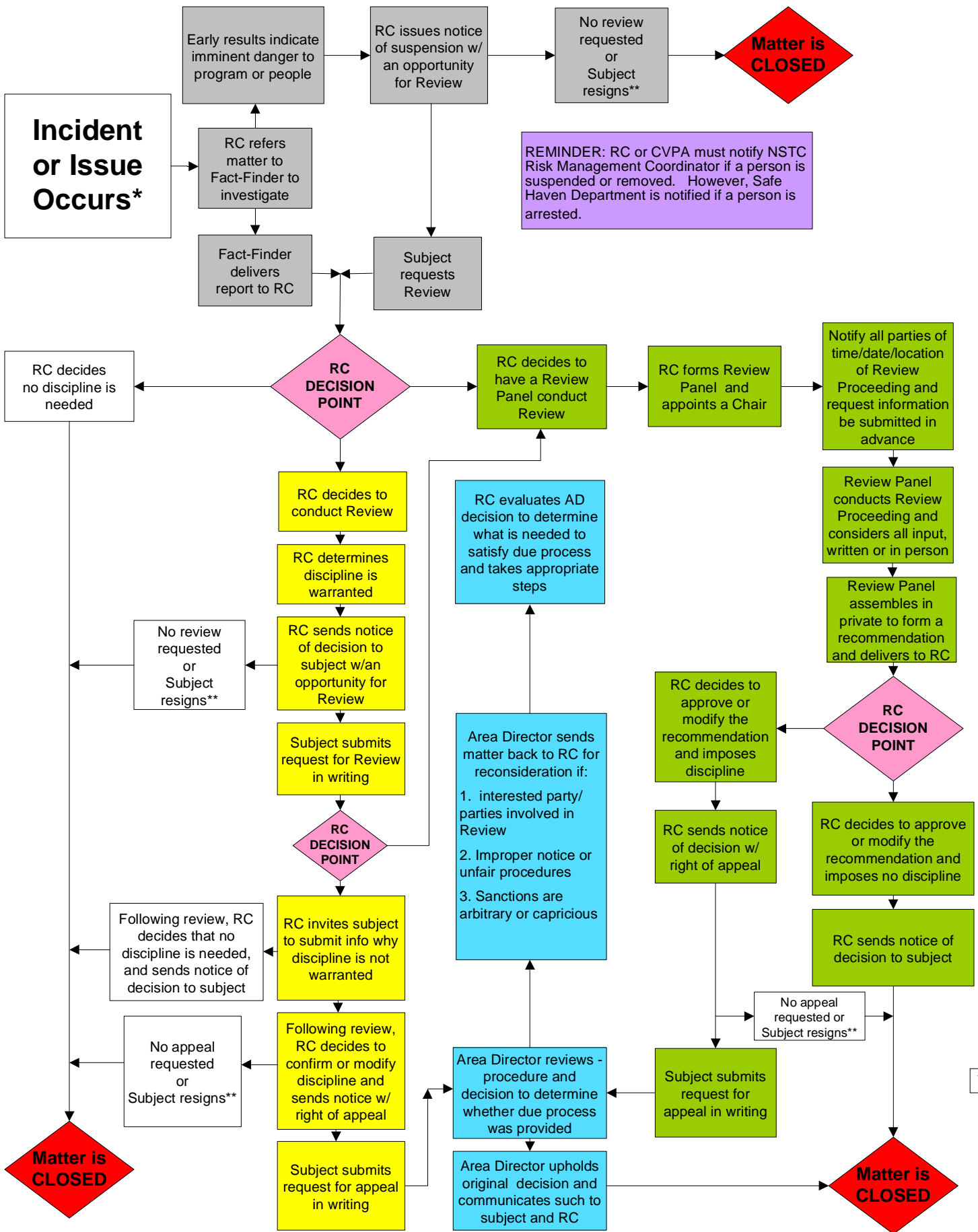




AYSO DUE PROCESS FLOW CHART



* If the RC is a witness or has an interest in the matter, the RC should appoint a neutral person who will take the RC's place in this process.
 **The option to resign identified in this flowchart should not be provided if an adult is accused of a violent act or an alleged sexual offense.
 REMINDER: IF ANY person resigns, the CVPA must record the resignation in the CVPA screen in eAYSO.